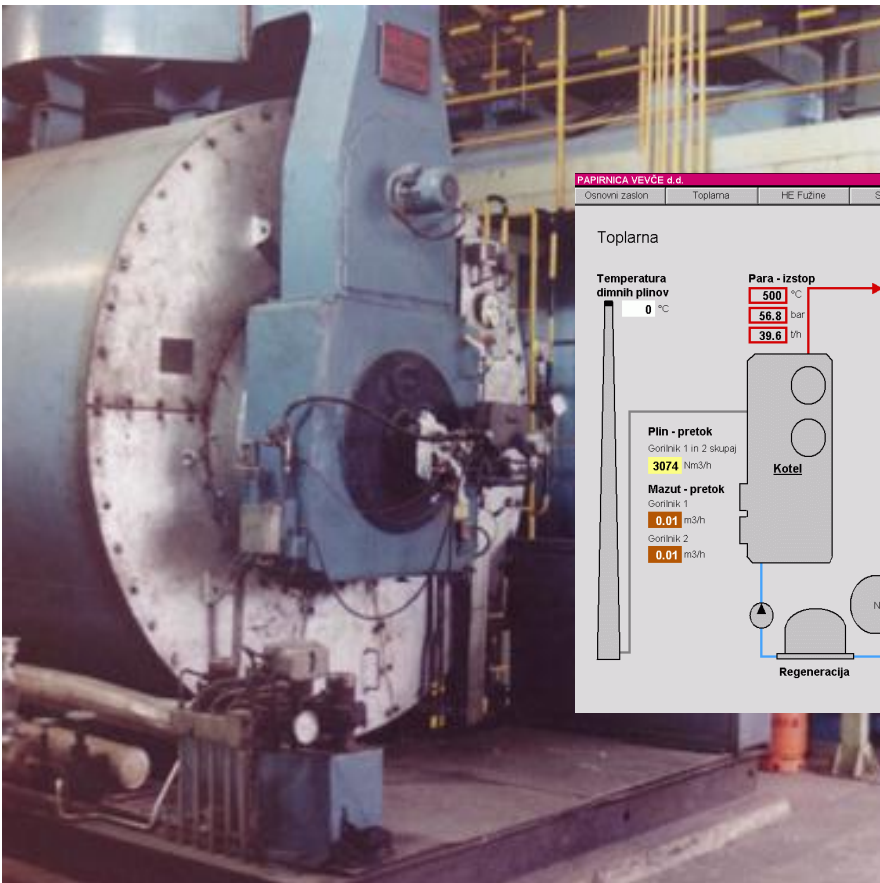


KORONA

B & B PAPIRNICAVEVČE

Energy Management System



CLIENT

B&B Papirnica Vevče
Vevska cesta 52, 1260 Ljubljana - Polje
Phone: +386 1 58 77 200 Fax: +386 1 52 84 175 www.brigl-bergmeister.com
Contact: Mr. Janez Gale E-mail: janez.gale@papier-vevce.si

SCOPE OF WORK

For better supervision of energy sources and energy consumers, as well as of related costs, in B&B Papirnica Vevece has been decided to establish an Energy Management System (EMS). EMS helps user at optimizing, arranging and managing of energy sources and consumers. Supplementary features are: alarming, archiving and report generating.

The hardware configuration is based on three Siemens PLCs which reside on different locations: heating plant, 6 kV switchyard and hydro power plant Fuzine. The data from PLCs is collected and processed on the SCADA computer in the control room of heating plant.

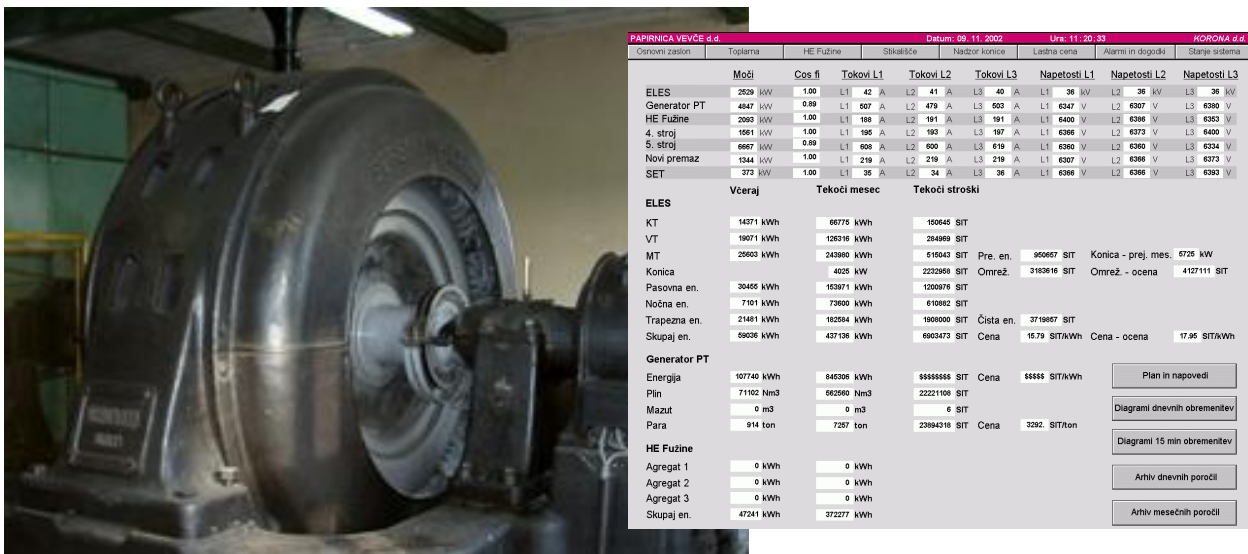
Software part of EMS consists of two main modules:

- peak-demand-preventing module calculates energy demand in certain period of time and warns in case of exceeding the limit of maximum demand;
- costs-calculating module calculates the costs of energy production and consumption. Optimizing, arranging and managing of the energy system is based on calculated costs.

Performed tasks are the following:

- hardware supply,
- PLC programming,
- software programming on SCADA computer,
- documentation design, system testing and commissioning.

Connection with production management system is also expected in the future. By this the costs of energy consumption will be calculated in correlation with paper type and quantity.



PROGRAMMING, DESIGNING

Mark PIRC, BS Computer Engineer
Dragana PRIBIC, BS Electrical Engineer
Gregor ZUNIC, BS Electrical Engineer

PROJECT MANAGER:

Miha Levstek, BS Mechanical Engineer
E-mail: miha.levstek@korona.si