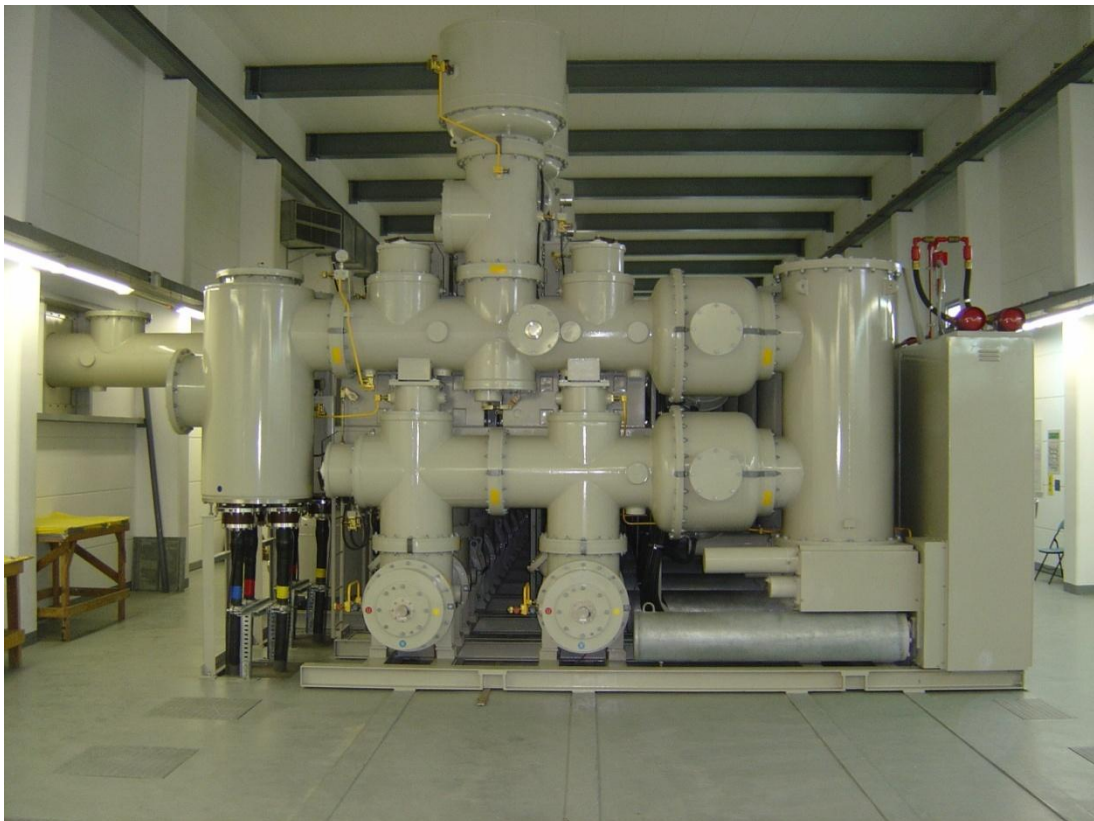


KORONA

SUBSTATIONS 110 / 13,8 kV

Engineering services for power transmission projects



INVESTOR

Saudi Electricity Company
Jeddah, Riyadh
Kingdom of Saudi Arabia

CONTRACTOR

NATEL Electrical Division
Jeddah
Kingdom of Saudi Arabia

1996 - 2006

SCOPE OF WORK

Korona's highly skilled engineers and specialists are involved in power projects in Slovenia as well as the Kingdom of Saudi Arabia, including the design for 110 kV transmission substations.

We provide the following services:

- Basic and detail design
- Documentation:
 - o Project documentation
Preliminary design, construction and design document
 - o Technical documentation
As-built document, maintenance and operation
 - o Other documentation
Tender documentation, investment plans
- Engineering

In addition, we specialize in SCADA projects. Several projects have been completed in the Kingdom in cooperation with NATEL.

KORONA has excellent contacts with major manufacturers of electrical equipment in Central and Eastern Europe enabling them to provide very efficient technical and procurement support for main equipment and protection system for transmission projects for the Saudi market.

Reference projects include engineering and design of 110/13,8 kV substations: Al Nasr, Iskan Al Aam, Rabigh, Arafat, Mina, Shoaiba, Al JAmnia, Abhur South, Al ZAhrah, Jeddah , South Azizah, Al Mansoor, Al Falak. Taif, Faisaliyah, Jamia ...

