

KORONA



A u t o m a t i c m e t e r r e a d i n g

Automated meter reading (AMR) is a state-of-the-art technology that enables collection of data from geographically dispersed meters and other devices at customers' premises.

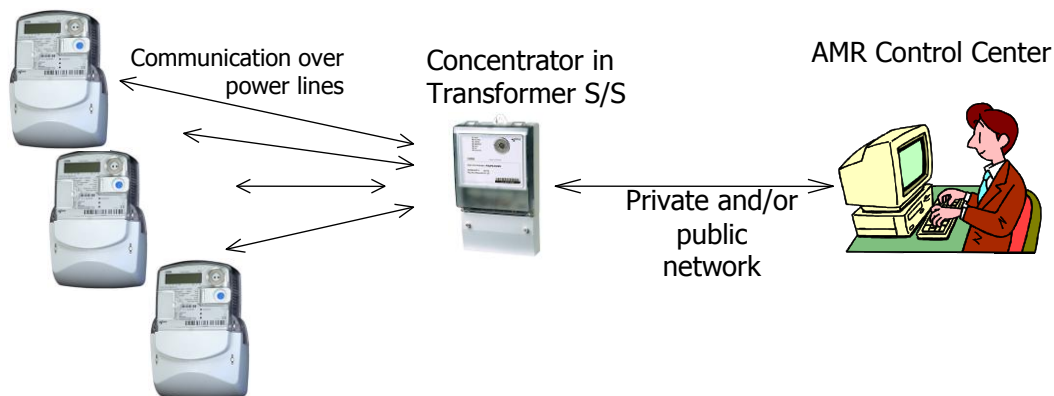
The data is collected at utility's central location using either private or public telecommunications networks. It involves the following components:

- electronic meters with register and communication interface unit,
- concentrators inside transformer stations,
- communication network or system to transfer the data from the meters to the utility's offices,
- an AMR control center computers to receive, collect and manage this data
- software to run the system and present the data to the utility's billing and other information systems

AMR presents a strong business case for distribution utilities. Namely, significant cost savings can be obtained by automating the monthly process of reading out the electricity meters with the on-line connection to the customer billing process. Such automation increases customer service, smoothens business operations, improves operational efficiencies and system reliability.

AMR system can be even further expanded with connect/disconnect option (to enforce payment policies) and other functionalities, like reading of water and gas meters.

Meters
with integrated
communication module



The meter data is sent from a module inside your AMR enhanced meter to a substation on the existing power lines (DLC – Distribution Line Carrier). From the substation the data then travels to the corporate data center via communication lines, where the meter data is then integrated with customer information and billing systems, resulting in the production of a timely, accurate bill.

Benefits of an AMR system:

- Reduction of Reading and Data Management Costs
- Revenue Protection – better meter reading accuracy
- Improves Customer Service
- Maximizes Asset Management
- Quickens Read-to-Bill Time
- Improves Cash Flow from Shortened Floats
- Reduces Bad Debt Due to Uncollectible accounts
- More closely track shrinkage due to theft or loss
- Balances Load with Power Purchases
- Offers Variable Pricing Schemes
- Real-Time Customer Load Information
- Real-Time Pricing Support
- Maximizes System Planning
- Power Quality and Reliability
- Outage Notification